

AP9100+ Water Filter System

Installation and operating instructions

Not even an Aqua-Pure® filter can make unsafe water safe

The AP9100+ water filter system should only be used on water that is microbiologically safe – that is, water that has been adequately chlorinated or disinfected. Additional equipment (such as a chlorine injection system or an ultraviolet steriliser) will be required for unsafe water.

It works best when it's used

If the Aqua-Pure® water filter system has not been used for more than one day, you will need to flush 1 to 2 litres of water through the system before using the water. The AP9100+ requires a minimum water supply pressure of 172 kPa (25 psi) and not exceed a maximum water pressure of 862 kPa (125 psi). A 650 kPa (94 psi) pressure limiting valve must be installed on the inlet side of this system (see below).

What a valve

The AP9100+ water filter system has been supplied with an Aqua-Pure® 650 kPa Multi-Function Control Valve (MFCV) as standard equipment. This valve must be installed as detailed in the installation drawings and instructions, to provide:

- Flow restriction
- 650 kPa pressure limiting
- Dual check backflow prevention
- Anti-hammer protection to the filter system

This valve is fitted with a Particle Removal Screen on the inlet side to protect the intricate mechanism from debris that may be in the water supply. This screen must remain in place at all times. Failure to comply with these requirements will void the warranty.

Have a change of heart every 12 months

The heart of an AP9100+ filter system is the AP9950 filter cartridge, which has a recommended maximum life of 12 months. The life and performance of a cartridge may vary depending on the volume and quality of the incoming water supply being filtered. Your cartridge may need replacing earlier than 12 months if you notice a reduced flow from the mixer tap, or the return of an unpleasant taste/odour to the filtered water.

Worth doing...worth doing properly

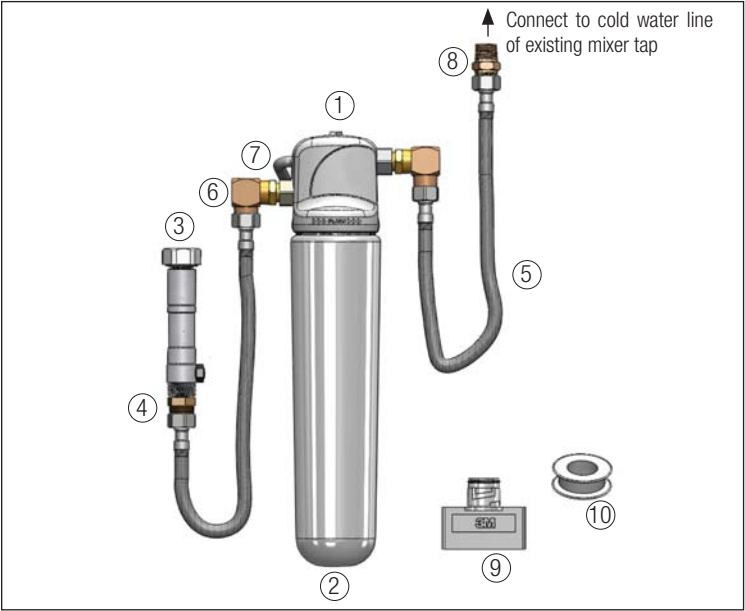
Installation of the AP9100+ filter system must comply with any existing state or local plumbing codes, some of which require installation by a licensed plumber. For correct operation of this appliance, it is essential that these installation and operating instructions be strictly observed.

WARNING: For correct operation of this appliance, it is essential that these installation and operating instructions be strictly observed.

CAUTION: Do not use with water that is microbiologically unsafe or with water of unknown quality without adequate disinfection before or after the system. Systems certified for cyst reduction may be used on disinfected water that may contain filterable cysts.

PREPARATION

1. Check your Aqua-Pure AP9100+ component identification and content checklist:



REF	DESCRIPTION	QTY	PART NO
1	3M VH3 3/8" NPTF Filter Head	1	70020021120
2	AP9950 Replacement Cartridge	1	AK200125909
3	98210 MFCV 650 kPa	1	AK200094782
4	1/2" BSP X 1/4" BSP Brass Nipple	1	AK200093396
5	Braided Hose 10mm 1/2"BSPF x 1/2"BSPF 1.0m	2	AK200095474
6	1/2"BSPM -1/2"BSPF Brass Elbow	2	AK200094428
7	3/8" NPT - 1/2" NPT Brass Nipple	2	AK200119308
8	1/2" BSP Brass Nipple	1	AK200093404
9	NEP A3 Bypass Plug	1	70020160308
10	Thread Tape	1	AK200095102

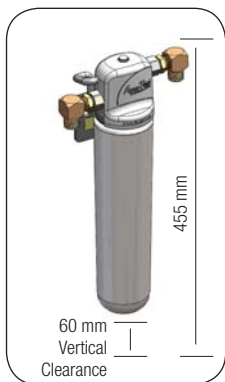


fig. 1

2. Decide where your Aqua-Pure® system should be installed before working out how.
Choose a suitable area within the cupboard under the sink to mount the AP9000+ water filter system see fig 1.

INSTALLING YOUR WATER FILTER SYSTEM

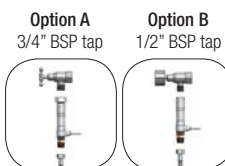


fig. 2

WATER SUPPLY

The installation of your Aqua-Pure® AP9100+ water filter system requires access to cold water feed from a standard 1/2" or 3/4" BSP tap, such as that used for dishwashers and mixer taps (ref fig 2).

CAUTION: This filter must be connected to cold water line only. If the dishwasher is connected to hot water, you cannot proceed to connect the water filter system to this hot water supply.

HELPFUL HINT: If there is insufficient room in your cupboard to install the AP9100+ water filter system vertically, it can safely be tilted up to 60 degrees clockwise or anti-clockwise.

1. Turn water supply tap off and remove dishwasher/mixer tap connecting hose from tap.



fig. 3

2. Remove black stopper plug from the Multi-Function Control Valve (MFCV) (3), thread tape and screw into side outlet port of MFCV until it is tight enough so it will not leak (ref fig 3).

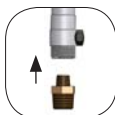


fig. 4

3. Thread tape and attach brass nipple (4) to the bottom part of MFCV (ref fig 4).



fig. 5



fig. 6

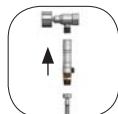


fig. 7

CAUTION! Do not overtighten MFCV

PLUMBING THE SYSTEM AND LET AQUA-PURE® WATER FLOW



fig. 8

1. Thread tape and attach 3/8" x 1/2" brass nipples (7) to the 1/2" brass elbow (6) (ref fig 8).

2. Repeat for the other piece of 3/8" x 1/2" brass nipples and 1/2" brass elbow.

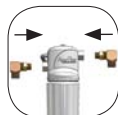


fig. 9

3. Thread tape and attach these fittings to both the inlet and outlet of the filter head (1) (ref fig 9).

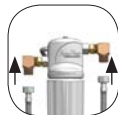


fig. 10

4. Attach braided hoses (5) to the 1/2" brass elbow (ref fig 10).



fig. 11



fig. 12

MOUNTING THE SYSTEM

1. Mark location of fixing holes (ref fig 11) and fix unit to cupboard with two of the mounting screws provided (ref fig 12). Remember, approximately 60mm space must be provided below the bottom of the cartridge, to allow removal.

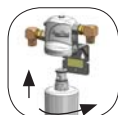


fig. 13

2. Remove protective red cap from cartridge (2). Align centre of label on cartridge with inlet on head (1), push cartridge into head firmly and turn to right (ref fig 13).

3. Attach outlet braided hose (5) to the 1/2" brass nipple (8) and existing braided hose from mixer tap (ref fig 14).

4. Making sure all connections are secure, turn mixer tap to ON position. Turn water supply on slowly to release any air trapped in the system. Allow the water to run through system for 2-3 minutes to flush superficial dust and fines from the system. Turn mixer tap off.

The water may appear "milky"; this is normal and it is caused by tiny air bubbles being expelled from the cartridge. You may flush water through the system until the water appears clear, or use the system and this condition will clear itself.

The Aqua-Pure® AP9100+ water filter system is now ready to produce clean and great tasting water for you and your family's protection and enjoyment.

WARNING: The plumbing code of Australia AS3497:1995 requires a pressure protection and backflow prevention device to be installed prior to filter system(s) plumbed into mains water supply. Failure to do so will not only void all warranty on filter system, but putting homes at risk of flooding in the event of damaged appliances during pressure surges.

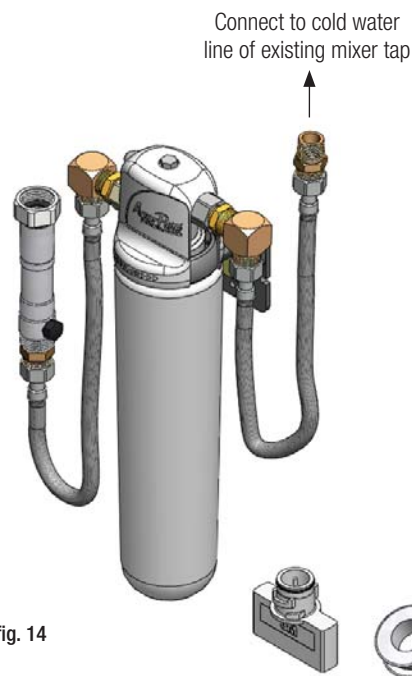


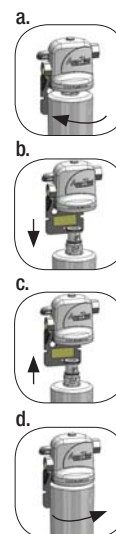
fig. 14



GUIDE TO REPLACE YOUR CARTRIDGE

1. Turn water supply off. If there is no isolation tap, turn off mains water supply.
2. Turn filter tap on to check water supply is off and to release any residual water. Leave filter tap in ON position.
3. Remove used AP9950 cartridge by turning it to the left, until the IN/OUT marker ▲ aligns to the marker on NEP head (ref fig a).
4. Hold cartridge firmly and pull downwards. (Be aware there will be approximately 15ml / 1 tablespoon of water spill) (ref fig b).
5. Drain and dispose of the used cartridge.
6. Remove red plastic cover on new AP9950 cartridge and insert into the head cavity. Align IN/OUT marker ▲ on cartridge to the marker on NEP head (ref fig c).
7. Turn cartridge to the right, until the LOCK marker ► on cartridge aligns to the marker on NEP head (ref fig d).
8. Slowly turn water supply on. Leave tap at ON position and allow water to run for 2-3 minutes to flush the new cartridge.

NOTE: Aqua-Pure® filter systems are designed for ease of installation. However, post-installation inspections are highly recommended. Check for leaks immediately after installation and once again after 24 hours. If leaks are detected, turn off water supply, drain water and inspect the leaks. If problem persists, contact the installer/plumber for rectification.



TREATMENT AND TESTS TABLE C1

This appliance meets the domestic water treatment appliance Standards AS/NZS 3497 and AS/NZS 4348 for the following water treatment process.

Class	Treatment Type	Function	Pass
I	Microbiological Status Bacteriostatic	Will stop bacteria increasing, but will not remove them unless II (a) is ticked	n/a
II	Microbiological Treatment		
II (a)	Bacteria Removal	Will remove inactive bacteria	n/a
II (b)	Virus Removal	Will remove inactive virus	n/a
II (c)	Protozoa Removal	Will remove inactive Cryptosporidium and Giardia	✓
III	Turbidity & Particulate Reduction	Will reduce cloudiness	✓
IV	Taste & Odour Reduction	Will reduce taste and odour	✓
V	Chemical Treatment	Will decrease chlorine compounds	✓

Legend ✓ = Pass Test N/A = Not applicable

NOTE: The use of this appliance may increase the bacterial content of the water unless supplementary treatment is provided.



Warranty Registration Card

This warranty registration section must be completed, registered online or posted within 14 days of purchase

Please print clearly

Title: Miss / Ms / Mrs / Mr or other, please specify _____
(please circle)

Name _____

Address: Suburb: State: PCode:

Contact No: Email:

Store name _____ Date of Purchase / Installation _____ / _____

3 YEAR WARRANTY & CARTRIDGE REPLACEMENT PROGRAM

Register online at

www.aquapure.com.au/warranty

or post this warranty registration card back to us

1. We will keep your warranty registered and safe on your behalf
2. We will send you an annual replacement cartridge reminder notification

AP9100+ Water Filter System

PERFORMANCE DATA SHEET AQUA-PURE® CARTRIDGE

Model: AP9950 Replacement Cartridge for AP9100+

This system has been tested according to NSF/ANSI Standard 42 and / or AS/NZS 4348 for the reduction of the substances listed below.

The concentration of the indicated substances in water entering the system was reduced to a concentration less than or equal to the permissible limit for water leaving the system as specified in NSF/ANSI Standard 42 and / or AS/NZS 4348.

Substance	Average Influent Concentration	Influent Challenge Concentration Units apply to each row	NSF / ANSI Guidelines	Avg. Product Water Concentration	Average Reduction %	Status
Chlorine Taste and Odour	2.125 mg/L	2.0 mg/L + 10%	≥ 50.00%	0.184 mg/L	96.02	PASS
Cyst	6.25 x 10 ⁴ /mL	6.25 x 10 ⁴ /mL	≥ 99.90%	26 / ml	99.96	PASS

Application Guidelines / Water Supply Parameters

Capacity	18,927 litres
Service Flow	5.7 lpm
Water Pressure	172-862 kPa (25-125 psi)
Water Temperature	4.4 °C - 38 °C

Testing Condition: pH: 7+/-1 | Temp: 20+/-5 Celsius | Pressure: 600 kPa +/- 100 kPa

Note that while the testing was performed under standard laboratory conditions, actual performance may vary.

System must be installed and operated in accordance with manufacturer’s recommended procedures and guidelines. Failure to do so may void warranty. See warranty card for details.

CAUTION: This filter system or cartridge is designed to be installed on the cold water line. Do not install on hot water line.

WARNING: AS3497:1998 requires dual backflow prevention and certified pressure control device to be installed prior to filter system(s) that are plumbed into mains water supply. Failure to do so will not only void all warranty(s) on the filter system(s), but will put the home at risk of flooding in the event of damaged appliances during pressure surges.

CAUTION: Do not use with water that is microbiologically unsafe or of unknown quality without adequate disinfection before or after the system. Systems certified for cyst reduction may be used on disinfected water that may contain filterable cysts.

To reduce the risk associated with property damage due to water leakage:

- Read and follow instructions before installation and use of this system
- Installation and use must comply with existing state or local plumbing codes
- Protect filter from freezing. Drain filter when room temperature drops below 4.4°C
- Contact plumbing professional if you are uncertain how to check your water pressure
- Do not install where water hammer conditions may occur. If water hammer conditions exist you must install a water hammer arrester. Contact a plumbing professional if you are uncertain how to check for this condition
- Install on cold water lines only. Do not install on hot water supply lines. The maximum operating water temperature of this filter system is 38 °C
- The disposable filter cartridge must be replaced every 12 months or at the specified service cycle
- Do not install near water pipes which will be in path of a drilling tool when selecting the position to mount the bracket
- Mount filter in such a position as to prevent it from being struck by other items used in the area of installation (waste baskets, etc.)

Warranty Conditions

The Aqua-Pure® AP9100+ Water Filter System is designed to operate at a maximum pressure of 862kPa (125psi) and at a maximum temperature of 38°C. 3M Purification Pty Limited ("3M") warrants this filter system to be free from defects in material and workmanship for a period of one year from the date of purchase ("warranty period does not apply to cartridge which is a consumable). This warranty is expressly limited to the repair or replacement at our premises of any part or parts proving defective providing the housing has been installed by a licensed plumber in accordance with our installation instructions and all relevant plumbing codes, the installation of an approved pressure limiting device preceding the filter, and the pressure and temperature do not exceed the limits stated herein. This warranty does not extend to mechanical damage caused during installation or use. To claim under this warranty contact 3M Purification on 1300 345 837.

This warranty only applies to 3M Purification Customers who purchase the Aqua-Pure® AP9100+ Water Filter System sold by 3M Australia.

This warranty is provided in addition to other rights and remedies you may have under law: Our goods come with guarantees which cannot be excluded under the Australian Consumer Law. You are entitled to replacement for a major failure and to have the goods repaired or replaced if the goods fail to be of acceptable quality and the failure does not amount to a major failure. This warranty is given by 3M Purification Pty Limited, ABN 28 003 075 812, Building A, 1 Rivett Road, North Ryde NSW 2113, Ph 1300 345 837.



Delivery Address:
PO Box 6767
Blacktown DC NSW 2148

No stamp required
if posted in Australia



Aqua-Pure® Water Filters
Reply Paid 6767
Blacktown NSW 2148