

# REFRIGERATOR REPLACEMENT FILTER

## PART NO: DA29-00003GWF

### INSTALLATION INSTRUCTIONS

AQUA BLUE H<sub>2</sub>O® DA29-00003GWF is a compatible replacement for the following water filters:

Samsung®

DA29-00003G, DA29-00003, DA29-00003B, DA29-00003A, DA29-00003A-B, DA2900003A, DA2900003B, TADA29-00003A  
TADA29-00003B, DA97-06317A, DA61-00159, DA61-00159A, DA61-00159A-B, HAFUCU1, HAFUCU1/XAA, HAFIN2/EXP  
WF289, WSS-1

**FILTER USE: 6 MONTHS OR 300 GALLONS, WHICHEVER COMES FIRST  
WILL VARY BASED ON WATER CONDITION**

#### FILTER FEATURES:

- Economical alternative to expensive substitutes
- Easy installation and operation
- Provides cleaner, fresher water by reducing impurities
- Designed to provide up to 6 months of life or 300 gallons
- Does not remove minerals which may be beneficial to health

#### OPERATING SPECIFICATIONS:

Minimum operating temperature.....0.6°C/33°F  
Maximum operating temperature.....38°C/100°F  
Min. working pressure.....140 kPa/20 psi  
Max. working pressure.....827 kPa/ 120 psi  
Rated capacity.....1,137 litres/300 gallons  
Flow rate.....1.9 lpm/0.5 gpm

**NOTE:** This filter should not be used with water that is microbiologically unsafe or of unknown quality without adequate disinfection before or after the system.

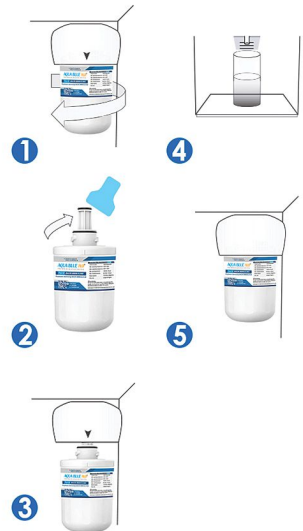


#### GENERAL INSTALLATION GUIDELINES:

- It is normal for black carbon fines (particles) to appear on the outside of your filter. This happens when the filter is jarred in shipping. It is safe, simply wipe it off.
- The filter connectors are larger to prevent leaks. You might have to twist the filter hard to make sure the connection is secure.

#### INSTALLATION INSTRUCTIONS:

1. Locate existing filter and remove it by turning it counter clockwise as shown in the graphic.
2. Holding new filter in your hands, carefully remove the packaging and sanitary end-cap from the new filter.
3. Apply slight upward pressure and rotate the filter clockwise. Ensure filter is fully installed in refrigerator head a full 1/4 turn. This is required to activate the internal valve inside the refrigerator. If the filter is not turned a full 1/4 turn, the valve will not fully open and may cause the water flow to be slow, or even cause the valve to make a chattering noise during use.
4. Dispense water into glass looking for good water flow. If flow is slow, remove and reinstall filter ensuring that the filter is a full 1/4 turn.  
NOTE: Initial flow rate may be slower than expected. Full flow rate should be restored within 24-36 hours.
5. Check filter one more time for any leaks.



#### STORAGE AND MAINTENANCE:

- Replace your filter every three to six months to prevent bacteria and fungus growth in your filter, supply lines, and storage tank.
- Stored filters do not expire. Keep your unused filters in a cool, dark, and dry place until you need them.
- If you do not use your water dispenser for more than four days, run two gallons of water before using it to prevent bad tasting water.

## FREQUENTLY ASKED QUESTIONS:

**Q: Do I need remove the filter prior to descaling equipment?**

**A:** Yes, remove filter prior to descaling and inspect for integrity if needed replace with a new DA29-00003GWF.

**Q: Why are there black specks in the water or why does my water taste funny?**

**A:** Water filters are made from the purest carbon blocks. When the filter ships it bounces around and knocks carbon granules loose from the block. These little carbon granules are called fines. All of the quality filters in the market place require a preliminary flushing to remove the carbon fines. Some systems may need to be flushed more than once. This is especially true if you have scale or lime water. If you go on vacation and do not use your filtered water for several days, flush the systems again to remove any stagnant water.

**Q: If I do not change my filter every 6 months, can this damage the system?**

**A:** Yes, you must replace the filter every six months or whenever the filter light comes on (whichever comes first), or sooner if water flow to dispenser or icemaker is reduced or if there is heavy sediment/rust present. Filters left in longer will fatigue and burst causing water damage. We recommend a water hammer arrester be installed in any home that uses a refrigerator water filter.

## UNCONDITIONAL PRODUCT GUARANTEE:

If you are dissatisfied with this product for any reason during the specified life of the product, please contact us at [admin@aquabluefilter.com.au](mailto:admin@aquabluefilter.com.au)

## WARNING:

To reduce the risk of property damage due to water leakage, this filter MUST be installed in accordance with the manufacturer's specifications and instructions. This filter unit must be replaced every 300 gallons or 6 months. Failure to follow instructions and operating specifications will void your warranty. Further, manufacturer assumes no responsibility or liability for damages arising out of misuse of the product. Samsung® is a registered trademark of Samsung Electronics Co., Ltd.

## Better Water Better Life

Our goal is to make clean water more accessible to everyone.



Unique, premium coconut carbon block gives you fresh water and leave beneficial minerals which may be beneficial to health.



Easy installation and operation, no tools required.



Reduce chlorine, taste and odor, mercury, cysts and lead for cleaner, great-tasting water.



Drinking filtered water helps keep you hydrated, maintain energy and feel better.



Save more than \$750 every 6 months in water filter bottle purchases.

\*Versus average household consumption of bottled water.



You'll get 300 gallons of clean filtered water every 6 months—which is like making thousands of plastic water bottles disappear.



◀ Scan here to Reorder  
or Contact us

☎ 1300 767 072

🌐 [www.aquabluefilter.com.au](http://www.aquabluefilter.com.au)

**AQUA BLUE H<sub>2</sub>O®**